



Maple

Bringing Vision into Reality...

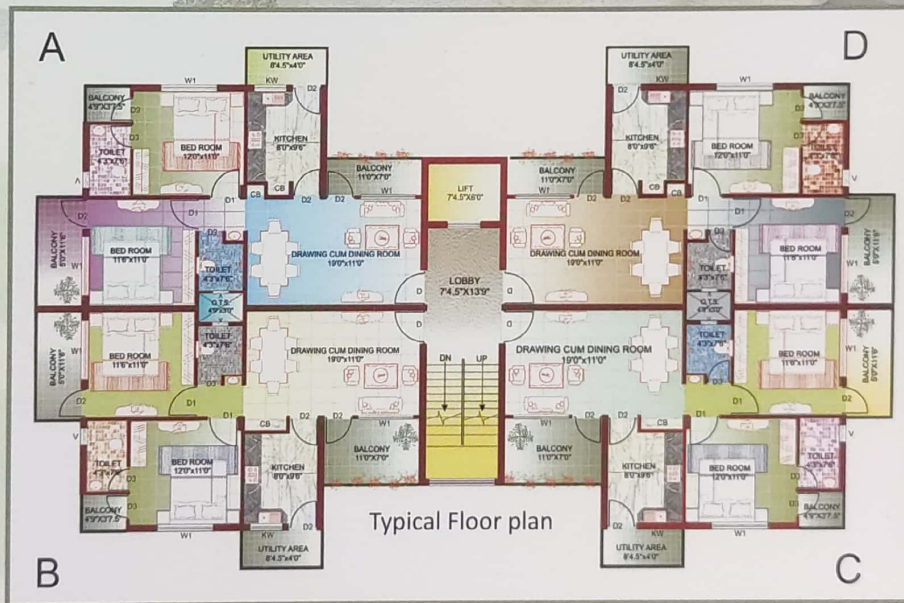
a Project by Hives Buildcon



Purple



Front View



AREA STATEMENT

TOTAL PLOT AREA IN POSSESSION	= 27986.4 SQFT.
PROPOSED BUILT UP AREA OF 1 UNIT	= 907.5 SQFT.
PROPOSED SUPER BUILT UP AREA OF 1 UNIT	= 1220.5 SQFT.
AREA OF LIFT, LOBBY & STAIRCASE	= 344.0 SQFT.



BUILDING SPECIFICATIONS

- ✦ R.C.C. Framed structure.
- ✦ Good quality flush door.
- ✦ Sliding Aluminium window covered with steel grill.
- ✦ PVC shutters for all the toilets.
- ✦ Vitrified tiles all over except balcony & washing area.
- ✦ Ceramic Tiles in toilet & Bath upto 7ft. height.
- ✦ Sanitary fittings of reputed make in all toilets.
- ✦ Internal walls will be in oil based distemper on POP base.
- ✦ Cement plastering & putty finishing on internal walls & Premium Weather coat on external walls.
- ✦ Kitchen platform shall be in Granite and glazed tiles upto 2' height above platform & SS.

- ✦ Concealed wiring ISI mark (wire / cable of reputed company) with separate meters for each unit, Power point for A/c in master bedroom, Cooler point in room, hall and other points for equipments like washing machine, refrigerator, geyser point required shall be provided.
- ✦ Generators for common areas like lift, staircase, open passage and garden etc.
- ✦ Concealed copper wiring with standard ISI make.
- ✦ Power Points for aqua guard, mixer / microwave & exhaust fan.
- ✦ Parking Area in ground floor.
- ✦ Fixed Car Parking on ownership basis.
- ✦ Storage of water in terms of overhead tank and under ground tank for round the clock water supply in entire complex.
- ✦ Lush Green Landscape Garden for common use.
- ✦ Lifts with Power Backup.



2 BHK
 Super Builtup Area - 1220.5 Sqft.

